

WATERDRIVE 2ND COMMUNICATION BRIEF

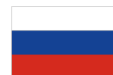
www.water-drive.eu

Waterdrive

Interreg
Baltic Sea Region



EUROPEAN
REGIONAL
DEVELOPMENT
FUND



WITH FINANCIAL
SUPPORT OF THE
RUSSIAN
FEDERATION



DEAR READER,

Spring is coming to the Baltic Sea Region and a new season for agriculture, water and ecosystems. This spring is different with the Corona crises but out there spring is not shutting down. How we will manage water and our natural resources will have a strong impact on our societies and landscapes. Are we making smart things for shortsighted personal benefit or smart things for the benefit of sustainable communities and ecosystems? The decisions are in the hands of you, me and all of us together. Farmers and local governments around the Baltic Sea send a clear message in the Waterdrive interviews saying that the long-term sustainability with a sound economy and sustained ecosystem productivity is what they striving for. Leaving something better for next generation is a guiding principle. But reaching those targets requires a lot of knowledge and complex insights, working with people, administrative systems and natural resources. Waterdrive partnership hopes to contribute and offer a learning and living platform across borders for making that happen. For sure, in the long-term perspective it is about how we build security and manages risks in our societies. Water has a key role in supporting both economic activity and enhancing ecosystem productivity. How can we develop our learning in that direction and enhance the vision of secure and prosperous, water embedded rural communities and landscapes? Is it a question of smart planning and management, better incentives or new modern digital technologies or a combination? Let's work together to find out!

WATERDRIVE PARTNERSHIP

Denmark
Finland
Germany
Estonia
Latvia
Lithuania
Poland
Russia
Sweden

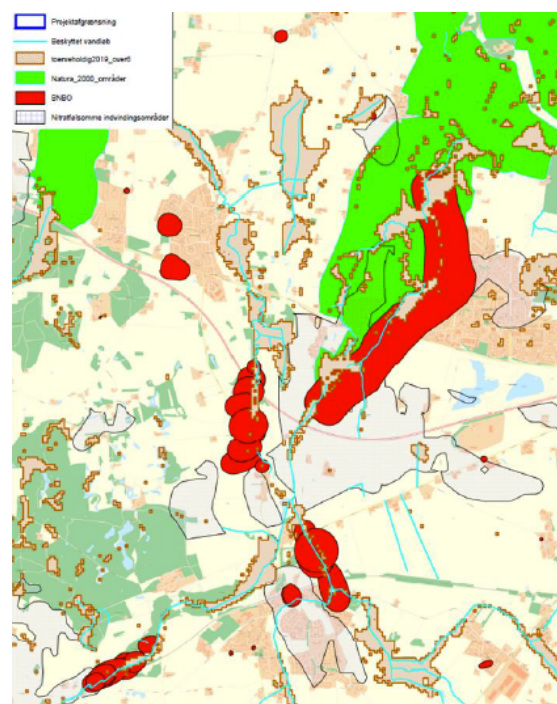


MULTIFUNCTIONAL LAND CONSOLIDATION IN DENMARK

The Danish government has launched a pilot scheme for multifunctional land consolidation and 20 million EURO has been allocated to this task in 2020-2021. The Danish Agricultural Agency expect that a total of 6-7,000 hectares of land can be distributed under this scheme.

The purpose of a multifunctional project is to consider several different tasks at the same time, for example, nature, environment, climate, open-air life and rural development, while at the same time allowing the farmers a better farmland allocation. Multifunctional consolidation is the farmers opportunity to be part of a larger local project that benefits both the farmer and the local area. The Danish Agricultural Agency carries out and covers the costs of the land consolidation/land swap.

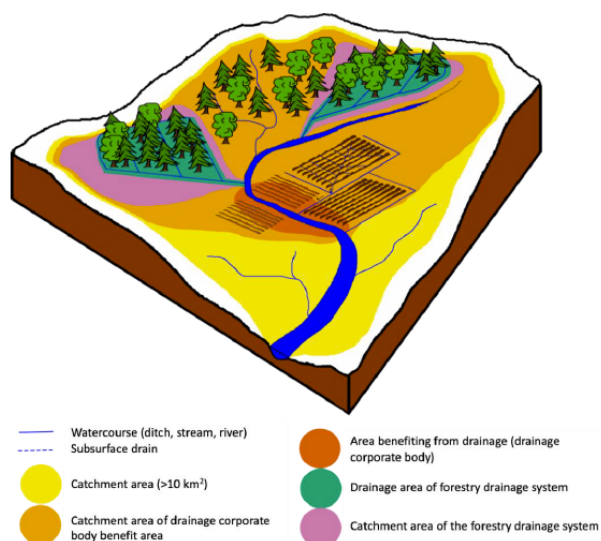
[READ MORE...](#)



WATERDRIVE TEAM IN ESTONIA IS FOCUSING ON NITRATE VULNERABLE ZONE

The pilot case for Estonia is the analysis of the governance and implementation of the Nitrate Vulnerable Zone (NVZ). This is a karst-area in the central part of the country extending over 3260 km² and 10 municipalities. The controversy lies in the fact that NVZ holds the best soils in the whole country on one hand and that the groundwater is unprotected and vulnerability to nutrients on the other hand.

[READ MORE...](#)



STRATEGIC GUIDELINES FOR WATER RESOURCE MANAGEMENT IN AGRICULTURE AND FORESTRY IN FINLAND

During the last year, a working group consisting of members from the Ministry of Agriculture and Forestry, the Finnish Field Drainage Association and Tapio Oy has prepared a strategic document concerning water resource management (WRM) in agriculture and forestry. Tapio Oy, suitably named after the god of the forest in Finnish mythology, is a leading advisory and consult organization in the field of forest management.

[READ MORE...](#)

UPDATES ON WATER MANAGEMENT PROCESSES IN LITHUANIA

CAP development for new period is in progress

Currently Lithuanian Ministry of Agriculture is developing a CAP 2021-2027 strategic plan. After carrying out SWOT analysis for Lithuanian agriculture and rural development the needs for intervention with policy were identified. In main observations in the SWOT analysis were as follows:

1. The number of farms is quickly decreasing and the farmers are aging.
2. Low climate change mitigation and higher impacts on water quality.

[READ MORE...](#)



INDICATED FUTURE DIRECTIONS FOR WATER PROTECTION IN SWEDEN

Last of February the Swedish Government Official Report "Report on decreased eutrophication by enhanced local actions" was published. The main suggestions include:

- Invest in local catchment officers
- Facilitate exceptions from the right of public access to shorelines
- Introduce result-based payments schemes for eutrophication mitigation measures in CAP
- Enhance the national payment scheme (LOVA) for mitigation measures
- The Swedish Board of Agriculture and the Swedish University of Agricultural Sciences is suggested to be commissioned by the Government to research new rules for horsekeeping.

[READ MORE...](#)

NEW TYPES OF AGRICULTURAL ADVISORY SERVICES IN POLAND

Centrum Doradztwa Rolniczego w Brwinowie – CDR / Agricultural Advisory Centre in Brwinów – CDR, Poland

National context

In Poland, like in many other countries, growing problems regarding access of water for agricultural production have been identified recently as one of the main issues facing farming communities and public actors involved in agricultural sector managing.

The very issue of access to water resources has created a set of some specific challenges for agricultural advisory services:

[READ MORE...](#)

COOPERATION IN THE **LENINGRAD REGION** FOR THE HEALTHY BALTIC SEA

The Leningrad Region is one of the key territories of the Russian part of the Baltic Sea catchment, in view of its location, climatic conditions and developed agriculture. Given its importance in the international cooperation of the Baltic Sea region countries, the Leningrad Region government takes an active part in the implementation of projects and actions aimed at improving the environmental situation, in particular the protection of water resources. Scientific institutions, supervisory bodies and public organizations are actively involved in this activity. An important role in the development of environmental measures is played by international projects implemented in the region under the South-East Finland – Russia CBC Programme 2014-2020 and the Interreg Baltic Sea Region Programme 2014-2020, in particular the current projects are: Waterdrive, Luga Balt and Sevira.

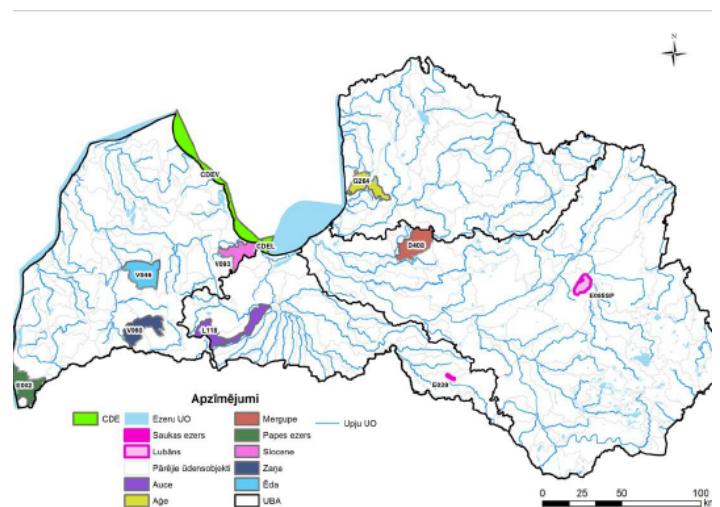
[READ MORE...](#)



Luga River ©Luga-Balt2

LARGE SCALE COOPERATION TO IMPROVE WATER QUALITY HAS BEEN STARTED IN **LATVIA**

There have been different individual and cooperation projects implemented in Latvia to address water management issues during last decades. However, a systematic and downscaled evaluation of specific impacts on water quality by different sectors (urban areas, industries, rural households, agriculture, forests etc.) at the level of water body was still missing, as well as solutions to improve water quality needs further developments. In order to test and evaluate integrated approach for water management in Latvia, NGOs, universities, municipalities and state institutions have started the large scale action - LIFE GoodWater IP project.



For more information visit
www.water-drive.eu

[READ MORE...](#)